



# HANIYA HIBA VOL-34



D.NO  
3401



D.NO  
3402



D.NO  
3403



D.NO  
3404



D.NO  
3405



D.NO  
3406



D.NO  
3407



D.NO  
3408



D.NO  
3409



D.NO  
3410

PAKIZA  
PRINTS  
پاکیزہ  
پرنٹس

Text

Te



**PAKIZA**  
PRINTS  
پاکیزہ  
پرنٹس

YOU GOTTA HAVE STYLE.  
IT HELPS YOU GET DOWN  
THE STAIRS. IT HELPS YOU  
GET UP IN THE MORNING.  
IT'S A WAY OF LIFE.  
WITHOUT IT, YOU'RE  
NOBODY. I'M NOT  
TALKING ABOUT LOTS OF  
CLOTHES.

D.NO  
8405



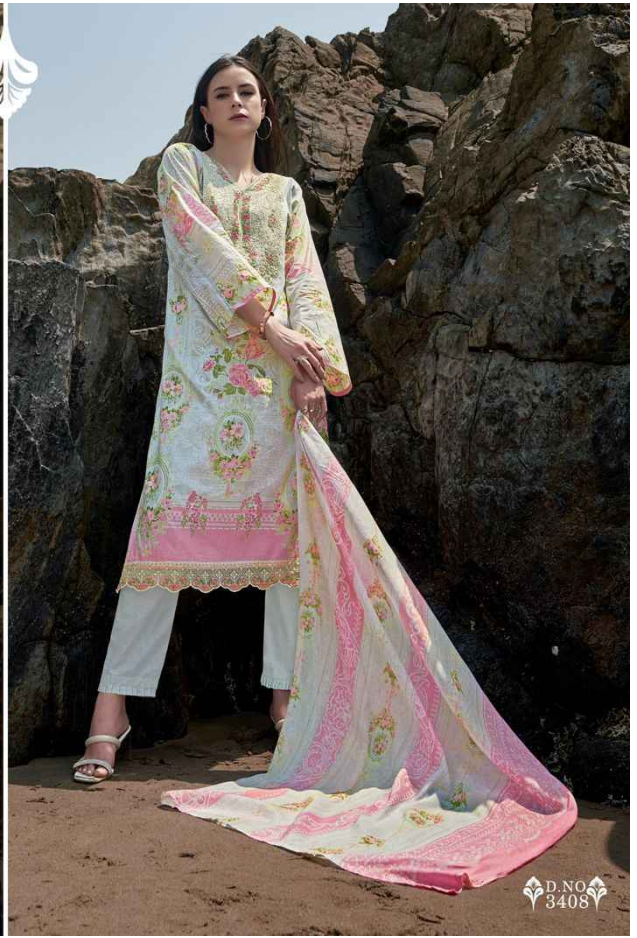


**PAKIZA**  
پاکیزہ  
پرنٹس

YOU CAN NEVER TAKE TOO MUCH CARE OVER THE CHOICE OF YOUR SHOES. TOO MANY WOMEN THINK THAT THEY ARE UNIMPORTANT, BUT THE REAL PROOF OF AN ELEGANT WOMAN IS WHAT IS ON HER FEET.



D.NO  
3404





# HANIYA HIBA

VOL-34



**EMBROIDERY** : Heavy Neck & Daman With Stich With Seroski

**TOP** : Lawn Cotton Designer Prints 2.45 Metre Approx

**DUPATTA** : Cotton Mal Mal 2.25 Metre Approx

**BOTTOM** : Lawn Cotton 2.25 Metre Approx

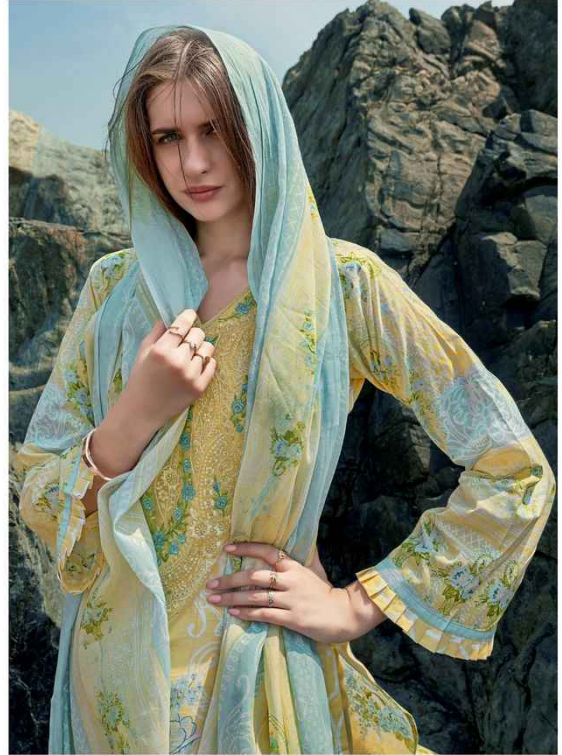
PARIS607 IS THE ARTIST TO SURVIVE THE REALITY OF EVERYDAY LIFE.





# HANIYA HIBA

VOL-34



**EMBROIDERY :** Heavy Neck & Daman With Stich With Seroski

**TOP :** Lawn Cotton Designer Prints 2.45 Metre Approx

**DUPATTA :** Cotton Mal Mal 2.25 Metre Approx

**BOTTOM :** Lawn Cotton 2.25 Metre Approx





PAKIZA®  
PRINTS  
پاکیزہ®  
پرنٹس

D.NO  
3406

# HANIYA HIBA

VOL-34



**EMBROIDERY :** Heavy Neck & Daman With Stich With Seroski

**TOP :** Lawn Cotton Designer Prints 2.45 Metre Approx

**DUPATTA :** Cotton Mal Mal 2.25 Metre Approx

**BOTTOM :** Lawn Cotton 2.25 Metre Approx



**PAKIZA**  
PRINTS  
پاکیزہ  
پرنٹس

D.NO  
3407

# HANIYA HIBA

VOL-34



**EMBROIDERY** : Heavy Neck & Daman With Stich With Seroski

**TOP** : Lawn Cotton Designer Prints 2.45 Metre Approx

**DUPATTA** : Cotton Mal Mal 2.25 Metre Approx

**BOTTOM** : Lawn Cotton 2.25 Metre Approx

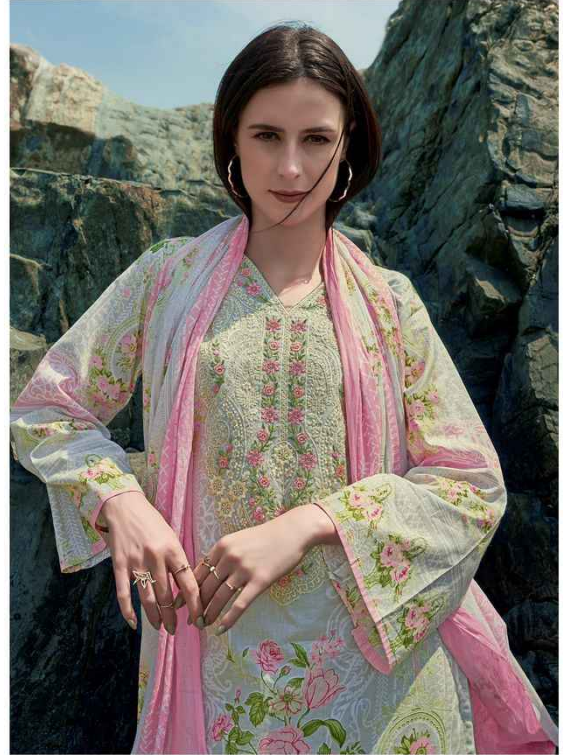


**PAKIZA**  
PRINTS  
پاکیزہ  
پرنٹس

D.NO  
3408

# HANIYA HIBA

VOL-34



**EMBROIDERY** : Heavy Neck & Daman With Stich With Seroski

**TOP** : Lawn Cotton Designer Prints 2.45 Metre Approx

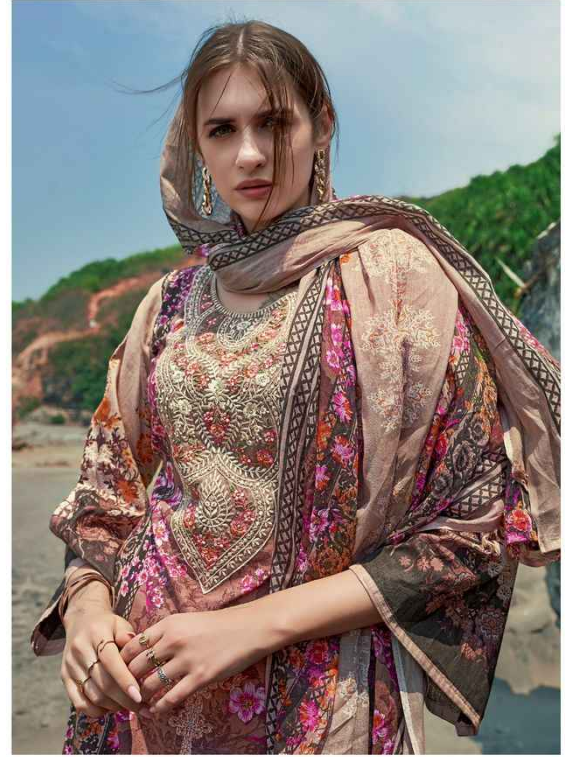
**DUPATTA** : Cotton Mal Mal 2.25 Metre Approx

**BOTTOM** : Lawn Cotton 2.25 Metre Approx



# HANIYA HIBA

VOL-34



**EMBROIDERY** : Heavy Neck & Daman With Stich With Seroski  
**TOP** : Lawn Cotton Designer Prints 2.45 Metre Approx  
**DUPATTA** : Cotton Mal Mal 2.25 Metre Approx  
**BOTTOM** : Lawn Cotton 2.25 Metre Approx



# HANIYA HIBA

VOL-34



**EMBROIDERY :** Heavy Neck & Daman With Stich With Seroski

**TOP :** Lawn Cotton Designer Prints 2.45 Metre Approx

**DUPATTA :** Cotton Mal Mal 2.25 Metre Approx

**BOTTOM :** Lawn Cotton 2.25 Metre Approx



# HANIYA HIBA

VOL-34



**EMBROIDERY** : Heavy Neck & Daman With Stich With Seroski

**TOP** : Lawn Cotton Designer Prints 2.45 Metre Approx

**DUPATTA** : Cotton Mal Mal 2.25 Metre Approx

**BOTTOM** : Lawn Cotton 2.25 Metre Approx





**PAKIZA**  
PRINTS  
پاکیزہ  
پرنٹس

# HANIYA HIBA

VOL-34



EMBROIDERY

Heavy Neck & Daman With Stich With Seroski

TOP

Lawn Cotton Designer Prints 2.45 Metre Approx

DUPATTA

Cotton Mal Mal 2.25 Metre Approx

BOTTOM

Lawn Cotton 2.25 Metre Approx

10 DESIGN CATLOGUE WITH LEATHER BAG







**PAKIZA**  
PRINTS  
پاکیزہ  
پرنٹس

