



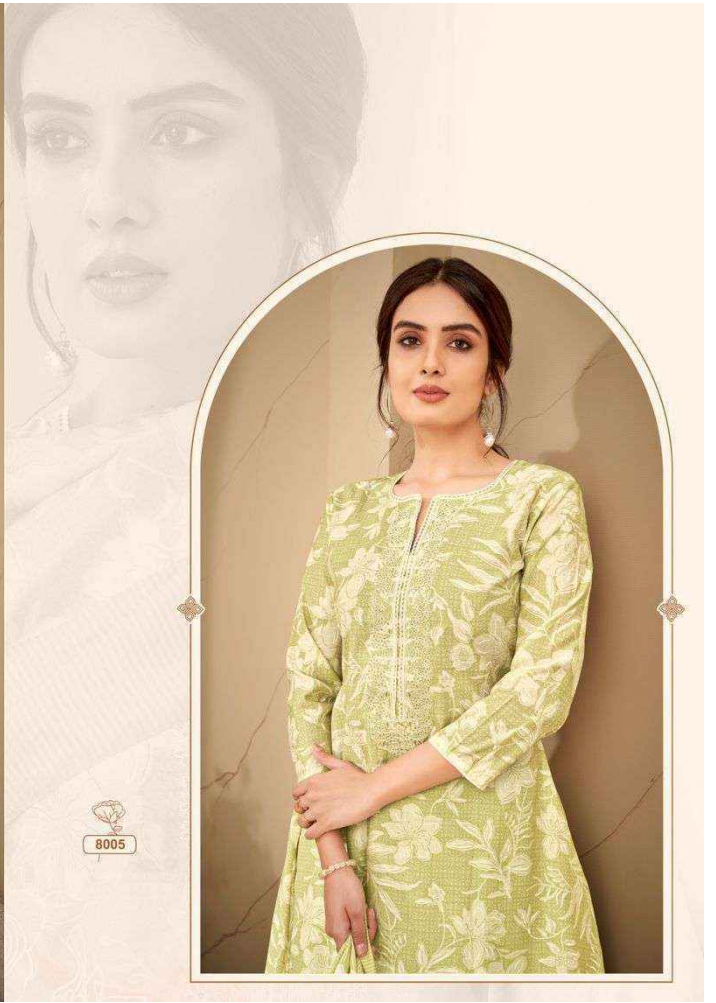
SELVINA SILK
Vol.8

A woman with dark hair is the central figure, wearing a light pink silk kurta with intricate white floral embroidery. She is also wearing a matching pink and white patterned scarf, large earrings, and a pearl bracelet. Her hands are clasped in front of her, holding a small white flower. The background is a simple, warm-toned wall with a curved architectural element on the right.

SELVINA SILK
Vol.8



















8001



8002



8003



8004



8005



8006



8007



8008