

A woman with long dark hair is the central focus, wearing a white long-sleeved top with intricate purple floral embroidery and a matching purple shawl. She is standing in a harbor with many sailboats in the background under a clear blue sky. The entire image is framed by a decorative border with floral patterns in the corners.

SD
shradha
DESIGNER

SANA SAFINAZ

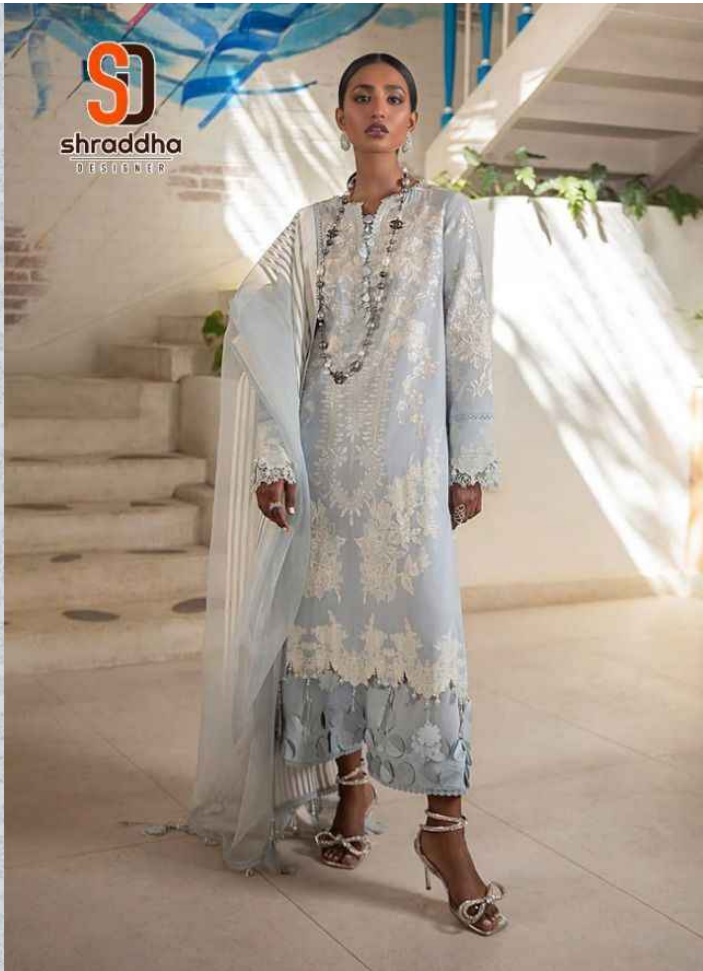
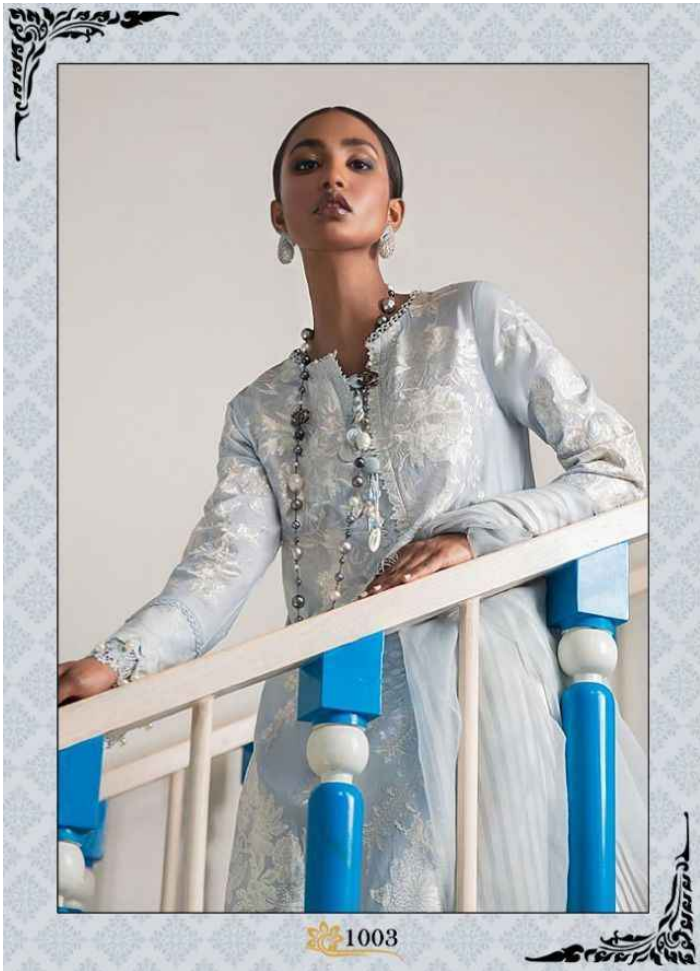
VOL-4

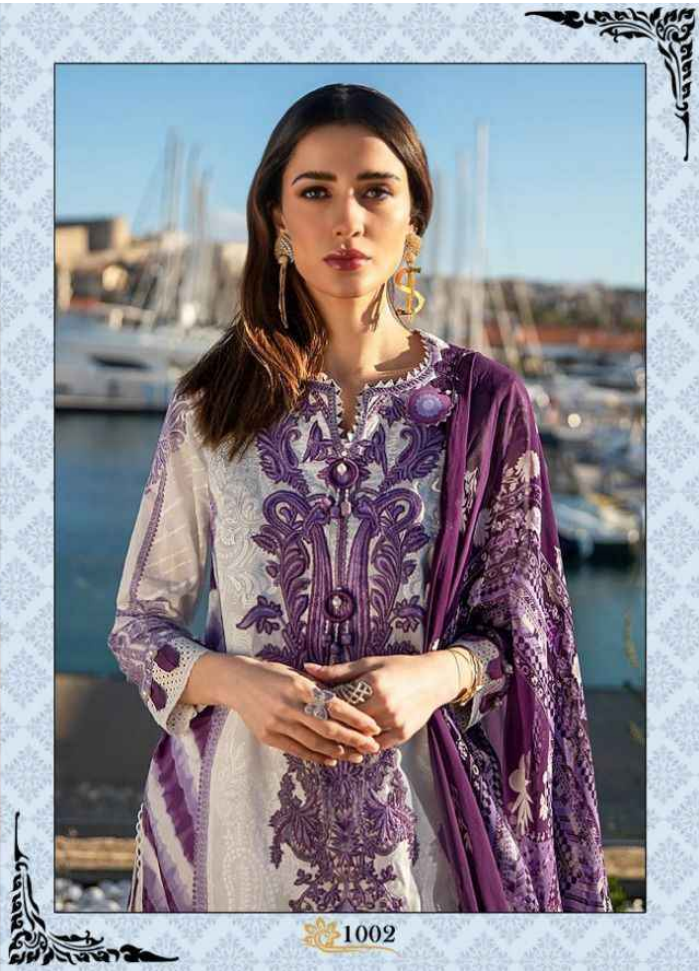


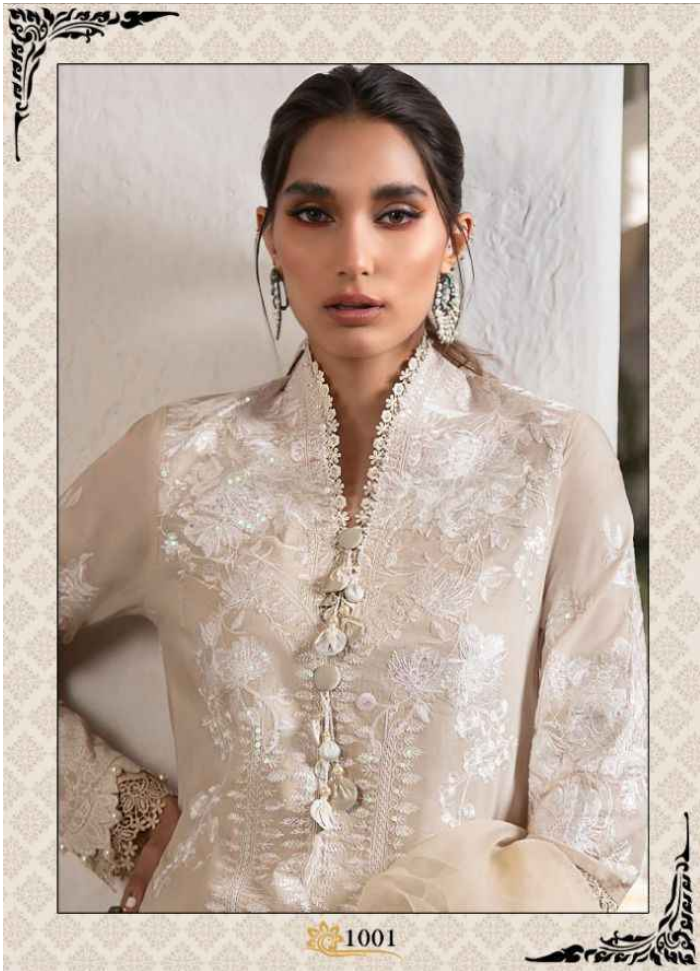
SD
shradha
DESIGNER

SANA SAFINAZ

VOL-4









1001



1002



1003



1004

