



LILY & LALI

DULCE PRIDE

A PRODUCT OF SAKSHI GROUP

Anarkali

NEW ARRIVAL
2025
COLLECTION



LILY & LALI

DULCE PRIDE

A PRODUCT OF SAKSHI GROUP

Anarkali



Half lined abbas, new with
embroidery, detailed design and work
from traditional motifs (Jaisalmer)





24701





fuel your ethnic love with embroidery detailed dress and make your wardrobe worth investment!





LILY LALI®

a brand by **Chiranjeevi**

Be it a party, event,

festival or wedding,

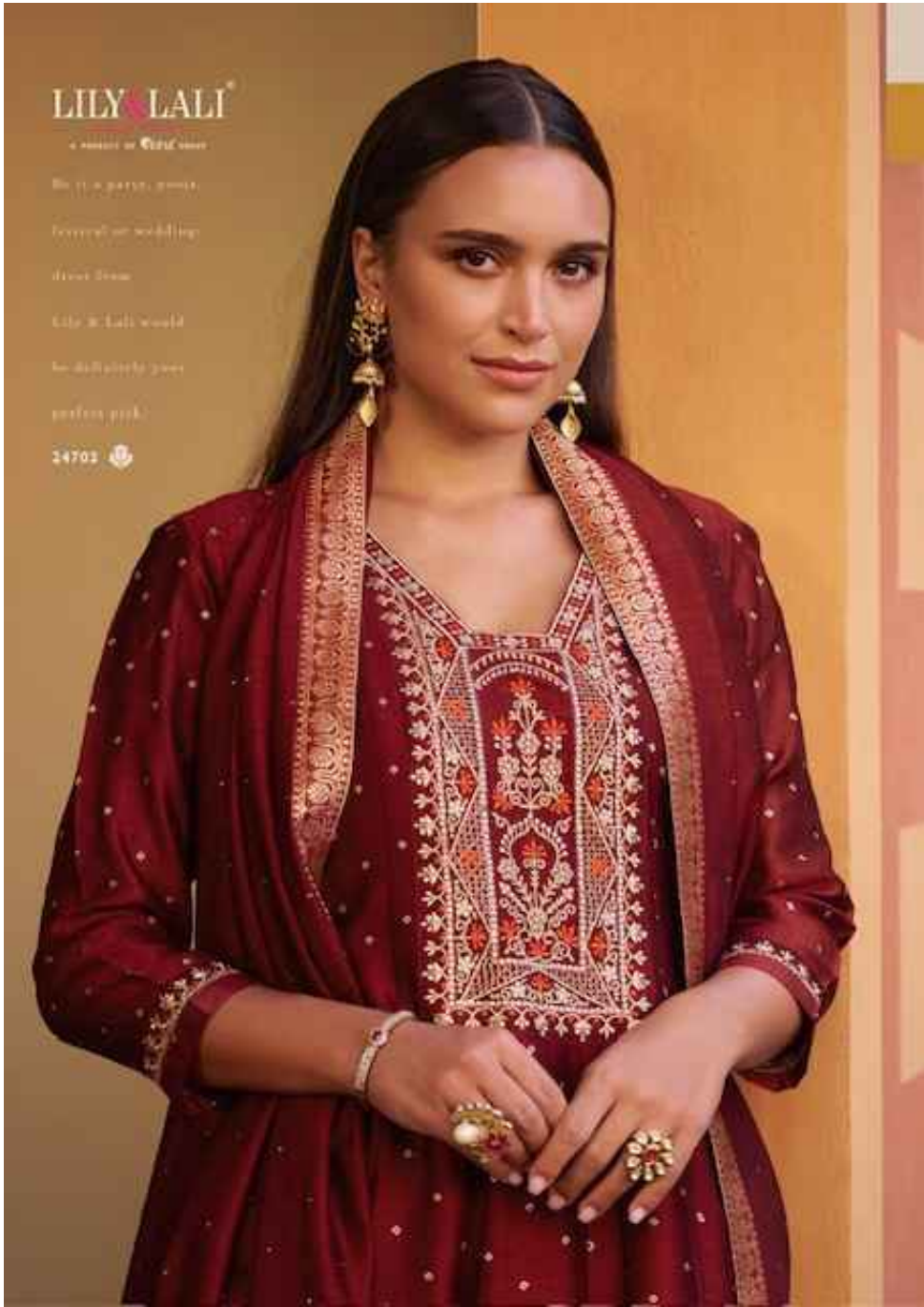
there's time

Lily & Lali would

be delightfully yours

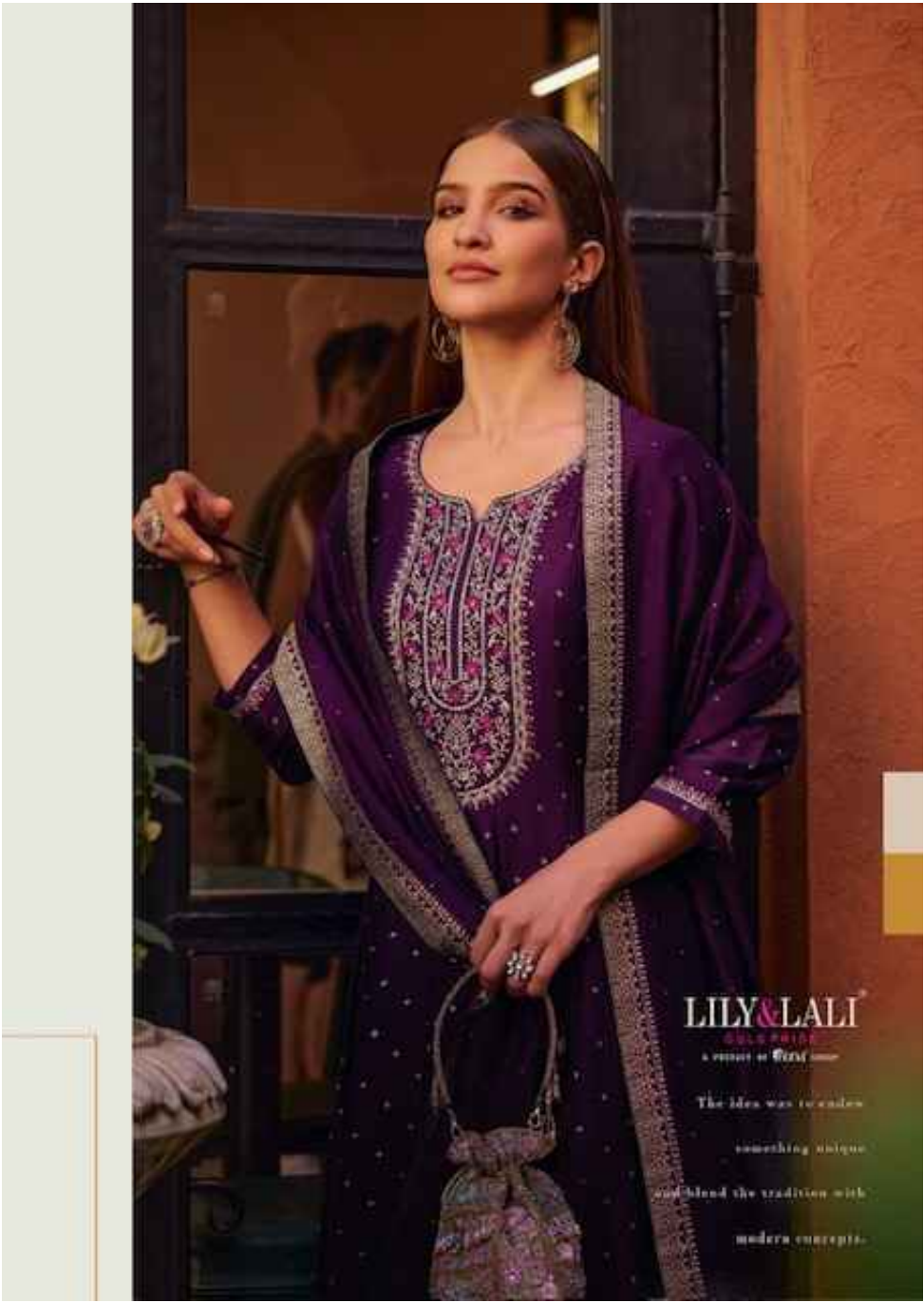
perfect pick.

14703 









LILY & LALI

GOLD PRIDE
a sister of GIFT

The idea was to create
something unique
and blend the tradition with
modern concepts.



LILY & LALI[®]
GULS PRIDE
A PRODUCT OF *fiona* GROUP

minimal and delicate work detail lends you an elegant and urbane look to astonish occasion.



 24704

LILY & LALI[®]
GULS PRIDE
A PRODUCT OF Sirona[®] GROUP



THE TRENDIEST SHOWCASE

When you see this dress, be assured, it would be the perfect statement piece in the look book.

24705 



LILY & LALI®
SUSA PAKISTAN
A MEMBER OF GOSWAMI GROUP

When you see this dress,
be assured, it would
be the perfect statement
piece in the look book.


🌹 24705

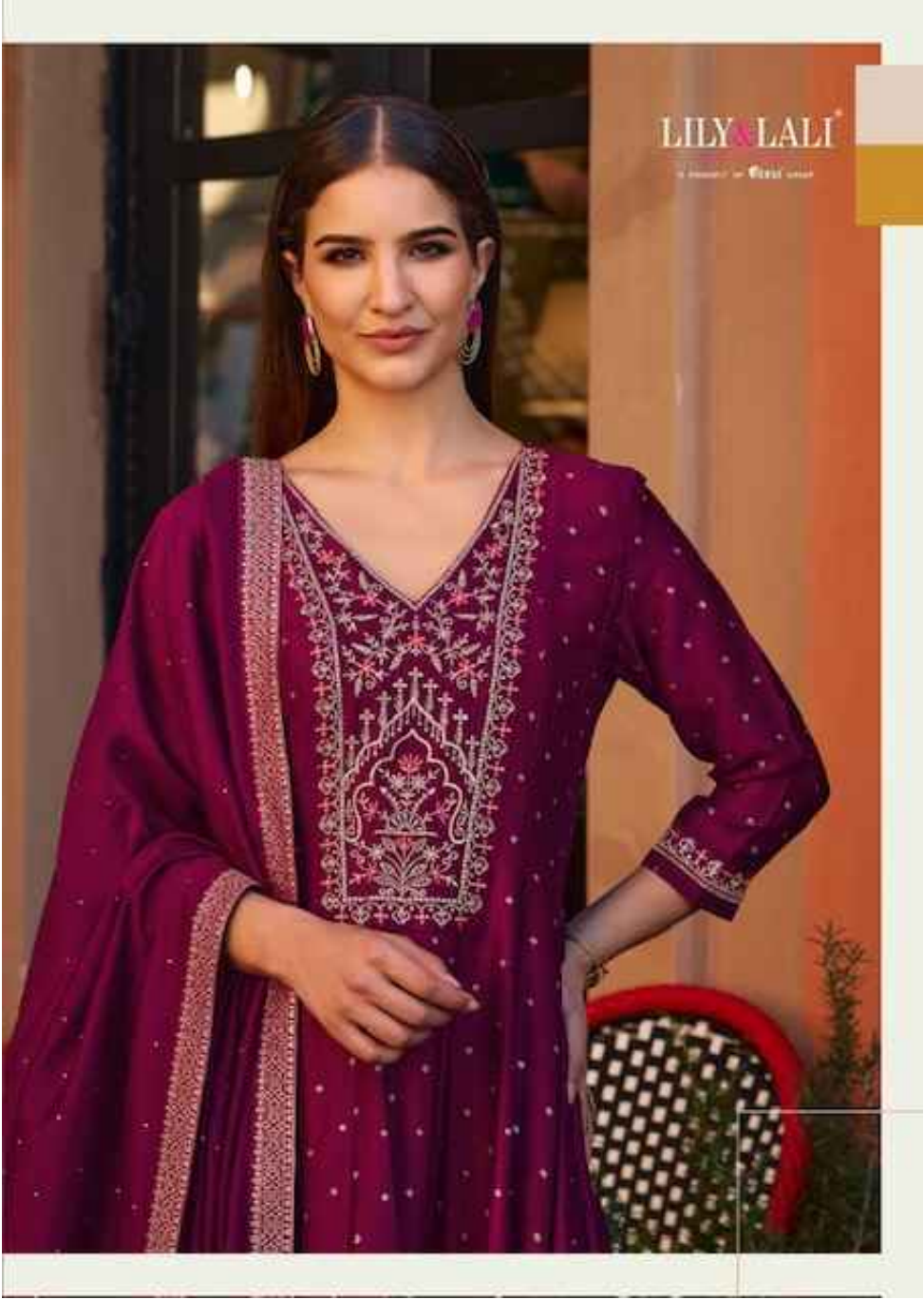






This festive season
this festive season shine on
with the newest trends
where there's always
with eternal grace!

24708 



24701



24701



24703



24704



ATIMELESS

LILY & LALI

CULS PRIDE

PRODUCT OF FIELD GROUP

Anarkali

